

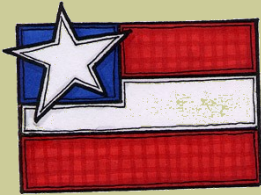
# PIONEER PATHS

Newsletter of the Herb Society of America  
Pioneer Unit

June 2019

Volume 26, Number 10

June 14  
Flag Day



—  
June 16  
Fathers' Day

—  
June 17  
Rose Full Moon

—  
June 21  
Summer Solstice



## MONTHLY UNIT MEETING

Date: June 13, 2019

Time: 9:30 a.m. Meet and Greet  
10:00 a.m. Program and Meeting  
ANNUAL MEETING

Location: Brenham Presbyterian Church  
900 South Jackson Street, Brenham, Texas

Directions: From Highway 290 in Brenham, take business 36 north (Day Street). Turn left off Day on College Street and then go two blocks to Jackson Street. The church will be on your left.

Program: Bats of Texas: Conservation and Ecology

Speaker: Dr. Samantha Leivers

Angel: Marijane Lipscomb  
Hosts: Sherry Tolbert, Catherine Gardiner, Leah Pearce,  
Frances Pittman, and Jana Rinehart

Lunch: Go Batty with Cool Salads



## MESSAGE FROM THE CHAIR

Greetings!

Hard to believe it's June already! We had a wet, rather stormy spring. While this was great for our gardens, it is also good for wild flowers and grasses. As usual, I can't keep up with the mowing, but my little container garden looks great! We are now left with a humid summer, but it seems as if there is still rain in our future. I hope so as it would relieve some of our watering requirements. I do hope everyone had a wonderful Mother's Day and Memorial Day.

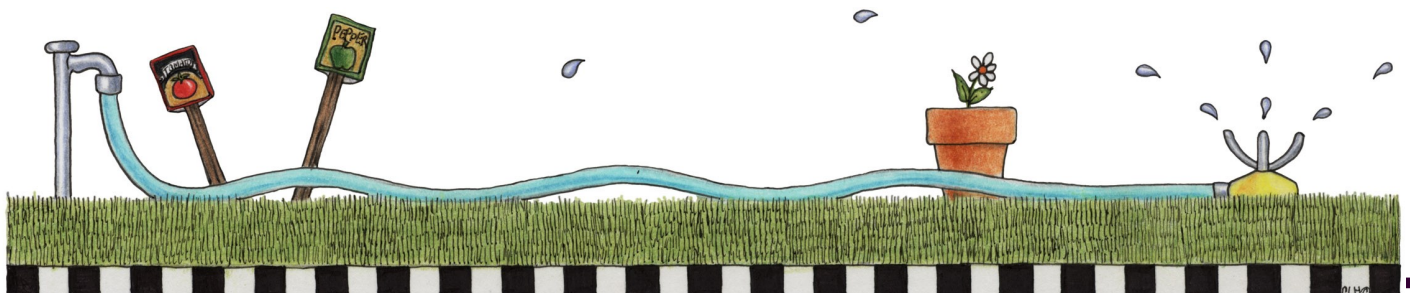
The June meeting of the Pioneer Unit will be our annual business meeting. We will be having reports available from all of our committee chairs. Final reports are due at the end of each fiscal year. Board members (Officers and Working Chairs) work enthusiastically to create wonderful learning and sharing environments for our members. This is our opportunity to look back over the year and remember past accomplishments. A few copies of the 2019 Final Reports will be made available at the meeting, but digital versions will also be available on our website [herbsocietypioneer.org](http://herbsocietypioneer.org) under the membership tab. These reports and the Yearbooks contain confidential information and are password protected. If you would like paper copies and don't have internet access, I'd be glad to make them available - just let me know.

Susan Lake has been providing support for our website for some time now, but she is seriously looking for someone who may be familiar with Wordpress or willing to become familiar with it. Hopefully there is a member out there intrigued by the idea of maintaining our web presence. Henry Flowers (of course) got us started and Susan enhanced the original design. It is a relatively stable product, but we are looking for someone to keep it going starting in fall this year. Susan has served us well, but she is ready to move on to new adventures. Please contact either her or me with questions/information.

Henry Flowers is representing the Pioneer Unit at the 2019 Educational Conference and Annual Meeting of Members in Madison, Wisconsin, and will not be at our June meeting. He will be presenting the Madalene Hill Award for Excellence in Herbal Education (1st ever!) to Gayle Engels, Member at Large, West District. We can look forward to hearing all about it in July.

By the way, the Educational Conference (Ed Con) is held every other year, with a shorter meeting in intervening years. EdCon is always a great travel and networking experience. In the meantime, I hope that you will all have a great summer, and I look forward to seeing you at the June meeting.

Karen Cornwell  
Unit Chair



## FROM YOUR PROGRAMS CHAIR

I'm not sure why we seem to have a curse on our bat talks, but the presenter I had lined up is having an important medical procedure done on June 13. Some of you know that the other 2 times we have scheduled this lecture, it was cancelled. However, our original presenter has kindly found us a replacement. Her colleague Dr. Samantha Leivers will be providing the bat talk! She has presented at conferences, for the public, and for video. Dr. Leivers holds a PhD in Animal Biology from the University of Western Australia (2015). Originally from Cambridge, UK, Samantha has conducted lab and fieldwork across the UK, Africa, Australia and the United States. I'm sure it will be a delight to hear her talk with her combination Aussie/English accent! I am looking forward to our June meeting.

A head's up that there will be sign up sheets at the June meeting for our next round of presenters into 2020. This will be for Host teams and Lead Host and Angels. Please remember if you have been an Angel or Host Team leader previously- let someone else have an opportunity to experience that position. Lead host as it is written in the yearbook needs to have served on a team at least once. Sign up for one slot as we have many members. These lists will be at both the June and July meetings and if there are holes to fill then we will ask for more people.

I am also hoping to have a sign up that lists dates in the future for Sensory Garden volunteers. There was a meeting in May with representatives from our organization and Brenham Elementary teachers on planning next year's activities.

The pictures I took at the May meeting have been put together and they are looking great. Think about having your picture taken in June or July so that everyone can get to know you. We are a community and let's learn who is in this herb society. Let's put a name on those wonderful faces we see almost every month.

See you soon at Brenham Presbyterian Church where we go Batty with Cool Salads.

Kathe Forrest  
Programs Chair



## MEMBERSHIP INFORMATION

We enjoyed an excellent program on 'Good Bugs, Bad Bugs' in May 2019 and had the largest numbers ever of guests and prospective active members, 14 in total! Mary Clare Ward and Jan Keenan were first-time visitors with Susan Yancey; Cammie Beierle, first time visitor, was with Lynda Perryman; and Sherrie Tolbert had four first time visitors: Brenda Holcomb, Donna Barr, Peggy Brisgiel, and Sandy Flagg! Debra Salcedo was visiting for her second time with Kathe Forrest. Linda Rowlett and I both invited Esther Hartman whom we met at the Honeybee Jubilee in New Ulm on May 4th. Esther is very excited about joining us and has already volunteered with Pat Garrett at the Festival Hill Gardens! Betty Pior had one first-time visitor with her, Lou Phillips, and Myra Simmons was also present with Betty. Nancy Klimowicz, first time visitor, was attending with Linda Yochim. And our loyal affiliate member Marijane Lipscomb was also attending. We welcome all of you and look forward to seeing you at our Annual Business Meeting at 9:30 a.m., June 13, 2019, at Brenham Presbyterian Church. Our business meeting always has interesting and informative news, especially for the newer members, and good information for all the members.

Our new fiscal year begins July 1, 2019, and many of you have already sent your Renewal dues. The form is available online at [www.herbsocietypioneer.org](http://www.herbsocietypioneer.org) and is also in this newsletter to print and mail with your dues. At this point in time, I'm holding the dues received so far to submit to our Treasurer at the meeting this month, June 13th, so it would be good if you will mail your dues to me at 607 Ross St, Brenham Texas 77833-2764. Dues are noted in the yearbook on page 31, Rules and Procedures, 1. Pertaining to the Bylaws, B. Article IV - Dues, Active - Single \$67, Active - Joint \$98, Affiliate - Single \$12, Affiliate - Joint \$18, HSA Life - Members only pay Local (Unit) dues \$12. A portion of your membership dues (0.7728%) is considered a tax-deductible contribution on your IRS Form 1040, Schedule A. It's imperative that we have these dues paid by June 15, 2019, and definitely before July 1. I will be posting this on the listserv also and hope that I don't need to email or phone anyone to remind them! Renewal forms will also be available at our June meeting.

Two of our Active members, Lucy Nehrkorn and Carolyn Thomas, are renewing as Affiliate members effective July 1, 2019. They have both contributed greatly to our Unit, for which we are grateful. Thank you, Lucy and Carolyn! Several of our Board Officers and Committee Chairs have Annual Reports due this month, and Membership will close the books for Volunteer Hours and Non-Reimbursable Donations on June 30, 2019. I look forward to and am steadily receiving emails of your volunteer hours and donations so I can record them in my Membership Annual Report. Thank you all for reporting these efforts to me. Toward the end of this month and July-August the Yearbook Committee, including Membership, will be drafting our 2019-2020 Yearbook and Membership Directory. Please be sure to notify Membership of any changes or corrections that need to be in the new yearbook.

Speaking of required volunteer hours at the Festival Hill gardens and the Sensory Garden, a prospective active member advised she wasn't aware of the need to volunteer at both gardens and asked me to post something where prospective members would know about this. Each prospective member receives an initial first visit letter, to welcome them. It's a detailed message, describing the 2 hours required at each garden, Sensory Garden and the Festival Hill garden, and whom to

contact by email and phone for each garden chair. Pro-rated dues and the badge fee are also addressed in this email. Planned workdays at each garden are also posted in the monthly Pioneer Paths newsletter. Workdays are also posted on our listserv, to which active members have access. Membership always forwards these emails to the prospective members to inquire if they can work their schedules in and attend these workdays. All of this information is also in the yearbook that each prospective member receives in Article III Membership on pages 25-27 and on page 31 Rules and Procedures where Dues are identified. Of course, Membership is always an email or phone call away to help prospective members and active or affiliate members with their questions, comments, or ideas and suggestions about Membership. And thank you to the prospective active member who addressed this issue.

Georgia Sowers  
Membership Chair  
[gzsowers@att.net](mailto:gzsowers@att.net)  
979-836-8228

#### JUNE BIRTHDAYS

June 1 — Henry Flowers

June 5 — Lucy Nehr Korn

June 11 — Candi Glancy

June 13 — Leah Pearce

June 14 — Ronda Herzog

June 19 — Peggy Richardson  
Diana Sellers

June 24 — Marijane Lipscomb



MINUTES OF UNIT MEETING  
HERB SOCIETY OF AMERICA PIONEER UNIT  
May 9, 2019

Karen Cornwell, Chair, welcomed members to the May meeting.

Kathe Forrest, Vice Chair Programs, introduced speaker Wizzie Brown with a presentation entitled 'Good Bugs, Bad Bugs'. Members can email Wizzie Brown if they have questions about bugs.

Kathe will be taking pictures of members who want their photo in the new Yearbook.

A display of 2020 Herb of the Year Anise Hyssop was available and was also at the recent Honeybee Jubilee in New Ulm. Narcissus and Byzantine Gladiolus were given away.

Karen Cornwell and the Board have proposed minor changes to the Bylaws in the new Yearbook:

- a) Page 28, B., top of page – add "in June" at the end of the sentence.
- b) Page 28, 3. Standing Committees, A. – delete the names of Standing Committees so the sentence reads "The Unit Chair shall appoint Standing Committee Chairs to serve for a period of two years." These changes will be voted on at the June business meeting.

A new Treasurer is needed to serve for one year as the current Treasurer is resigning. The job description is on the website and anyone volunteering can organize their own helpers. The Unit also needs a second Chair for the Sensory Garden. Marcella Ausmus is the Chair in charge of Garden upkeep. The Educational Chair will liaise with the school and coordinate Garden visits. Johnnie Pitts has had to resign for health reasons. Volunteers are needed to water in June, August, September and October.

Past Chair Henry Flowers and his Nominating Committee will seek the new officers and chairs for the term beginning in 2020.

Pat Garrett, Festival Hill Gardens Chair, needs volunteers for garden days on Thursdays. She will move the sign-in book from the Lettuce Lounge to the Greenhouse so it is more available. Thursday, May 16th, will be a work day and members can call Pat for more information.

The Pharmacy Garden workshop on May 7 was canceled due to rain. Henry will schedule more monthly workdays on Wednesday evenings. Forum 2020 will be the 25th anniversary for the Unit and a full-page ad will be placed in The Herbarist advertising the 25th Herbal Forum.

Georgia Sowers, Vice Chair Membership, welcomed visitors Donna Barr, Jean Bachofner, Helen Foster, Peggy Brisgiel, Sandy Flagg, Esther Hartman, Jan Keegan, Nancy Klimowicz, Myra Simmons, Lou Phillips, Mary Clare Ward, Cammie Beierle, Debra Salcedo, and Brenda Holcomb. She needs renewal forms ASAP.

Karen Cornwell reported a very enjoyable field trip to Lady Bird Johnson Wildflower Center and The Natural Gardener in Austin and a successful Honeybee Jubilee in New Ulm.

Lori Yeats thanked the lunch team and speaker angel Carolyn Thomas. Door prizes were won by Susan Yancey, Jean Bachofner, and Leah Pearce.

Respectfully submitted  
Pat Cox, Secretary

## THYME WELL SPENT SHOP

We are starting to gather fruit for jams and jellies for Forum 2020. If you have figs, peaches, blackberries, pears, red jalapeno peppers, or anything else we can make jam with, please give what you have to Carla Lessard. Figs, peaches, and pears can be fresh or cut up and frozen, not cooked. Other stone fruit should be cooked down and frozen.

If you have questions, please contact Carla. THANKS FOR ALL YOUR HELP.

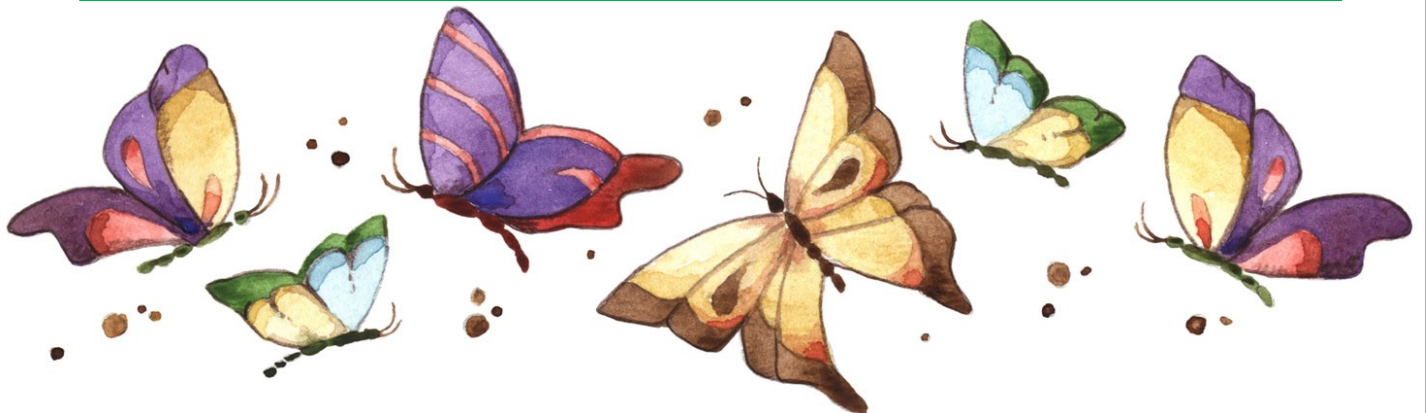
Pat Cox and Jane Press  
Co-Chairs



## FESTIVAL HILL



Festival Hill Work Days will be the third Thursday of the month from 9:00 a.m. till 12:00 noon. Pat Garrett will be present to guide the work day. The book for signing in when you work at Festival Hill is to be placed in the greenhouse so it will be easily accessible. Everyone is welcome!



## The History and Mystery of Herbs

### Myrtle

Botanical Name: *Myrtus communis*  
Common Name(s): myrtle, Grecian myrtle  
Family: Myrtaceae

Myrtle is a venerable evergreen aromatic shrub from the Mediterranean. I have long appreciated this plant for its rich scent, its glossy green leaves, its pretty white flowers and therefore its great usefulness in flower arrangements of various kinds.

Myrtle comes in a variety of forms—most of which have a similar aroma and flowers. The main differences are in the leaf shape or size and the stature or growth habit of the plant. The most common one that might be encountered in the nursery trade is dwarf myrtle—*Myrtus communis* 'Compacta'. This variety has small leaves and a relatively dense growth habit, but can reach up to about 15 feet in height if not regularly pruned. The plain form of myrtle has much larger leaves and an even greater stature. At Festival Hill there are still both of these plants in the gardens, as well as a few others such as 'Variegata', having cream-edged leaf variegation; 'Boetica', with an upright twisting growth habit and slightly curled leaves, commonly known as "twisted myrtle"; and a variety Madalene called "Latvian Wedding" myrtle, having an even smaller leaf than dwarf myrtle and a compact growth habit. Perhaps this last variety may be 'Nana' or Tarentum myrtle, also known as German or Polish myrtle—used commonly in both countries in wedding bouquets. Three of these varieties can be found in the cloister garden.

Speaking of pruning, myrtle lends itself to routine shaping so that it can be kept as a specimen shrub, used as a hedge, trained up into a tree-form or even kept as a containerized topiary plant. At home I have a plant that was originally a one gallon specimen that I am now training into a standard one-ball topiary in a terra cotta pot. Myrtles are one of the easiest plants to do this with and if you have never done so and would like to try your hand at topiary, I suggest myrtle as a great plant to start with. Find a plant with a nice straight stem and start clipping.

Historically this herb was held sacred to the goddess of love, Aphrodite (Venus), by the Greeks and Romans. Thus in the Language of Herbs it became symbolic of love. It is also sometimes listed as "undying love" and "immortality." Along with the citron, willow and date palm, myrtle is used by Jews in their Feast of the Tabernacles (Sukkot). For them it remains a symbol of peace.

Some say the name myrtle comes from the Greek *myron*, meaning perfume. Another story says that it comes from the name of a Greek maiden, Myrsine, who suffered from pangs of love and was transformed by her irritated mistress, Hera, into the myrtle. Before bay laurel became popular for making crown wreaths, myrtle was used in this manner by the Greeks to crown victors in their Olympic games. Athenian magistrates wore crowns of myrtle as a symbol of their authority.

Myrtle has long been used in flower arrangements, especially in bouquets. It is a traditional element incorporated into a bridal bouquet, often along with the herb rosemary, symbolic of remembrance. While visiting her husband's homeland of Saxe-Coburg and Gotha (now in modern



day Germany) in 1845, Queen Victoria was given a bouquet by Albert's grandmother. It contained some myrtle cuttings which were rooted and planted at the royal residence of Osborne on the Isle of Wight. The queen's eldest daughter, Victoria, had pieces from this myrtle in her bridal bouquet and ever since it has been included in the bridal bouquets at royal weddings—Diana, Kate, and even Meghan. Queen Elizabeth II also had it in her bouquet and had that myrtle rooted and planted in a separate garden.

For culinary purposes myrtle is a pungent herb. Shepherds in the Mediterranean would often roast lamb over branches of myrtle. It has also been used to stuff pork. Its fruits are used fresh to flavor a liqueur known as *Mirto*, and the dried fruits are sometimes used as a condiment for their peppery taste. The aromatic essential oil is used in potpourris and in perfumery. The natives of the island of Sardinia are particularly fond of the taste of myrtle. They line pits with it for roasting whole pigs and after boiling whole chickens cover the meat with myrtle leaves while it cools and then eat it the following day. You may note that the aroma of myrtle is somewhat similar to that of bay laurel (*Laurus nobilis*) and thus it has often been used as a substitute flavoring for that herb as well.

I hope that you will consider adding myrtle to your garden—either in the ground or in a container (or both)!

*"Instead of the thorn shall come up the fir tree, and instead of the brier shall come up the myrtle tree: and it shall be to the Lord for a name, for an everlasting sign that shall not be cut off."* Isaiah 55:13

Henry Flowers, HSA Pioneer Unit member



# HSA PIONEER UNIT MEMBERSHIP RENEWAL APPLICATION

*Due May 1*

Name: \_\_\_\_\_ Spouse: \_\_\_\_\_

Address: \_\_\_\_\_

City: \_\_\_\_\_ State: \_\_\_\_\_ Zip Code: \_\_\_\_\_

Phone: \_\_\_\_\_ Cell: \_\_\_\_\_ E-Mail: \_\_\_\_\_

Birthday (Month/Day): \_\_\_\_\_ Today's Date: \_\_\_\_\_

Membership Category

- Active - single \$67/ joint \$98     Life – single \$12/ joint \$18
- Affiliate (Unit or Member-at-Large) - single \$12/ joint \$18

(Make check payable to HSA-Pioneer Unit and give to Membership Chair at meeting or Mail to HSA-Pioneer Unit, ATTN: Membership, P O Box 23, Round Top TX 78954)

Program Recommendations:

Field Trip Recommendations:

\_\_\_\_\_

Please check accordingly: I  HAVE or  HAVE NOT COMPLETED THE REQUIRED 20 VOLUNTEER HOURS  
Active Members: HOW DO YOU PREFER TO FULFILL YOUR REQUIRED 20 VOLUNTEER HOURS?

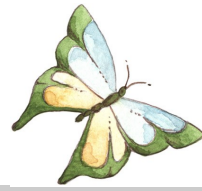
- Working in any Unit-sponsored garden, such as Festival Hill or Brenham ISD, and any other Unit-approved garden, or seed cleaning
- Herbal Forum at Round Top and Forum preparation throughout year supporting efforts pertaining to preparation of items, such as Thyme Well Spent Shoppe, as well as mail outs, packets, and plant sale preps
- Hosting at a meeting, including a.m. refreshments, setup/cleanup, decorating, serving lunch, including Angel duties
- Educational activities for promoting the knowledge, use, and delight of herbs, such as presentations (including a/v), research articles for newsletter (up to 4 hours prep), participation in education events
- Unit administration, such as hours spent performing duties as Officer or Unit Board of Directors member, maintaining or updating Unit scrapbook, sending greeting cards to Unit members
- Other approved activities as the Board of Directors may approve after review. We can work with you to find volunteer opportunities.

WE WELCOME YOUR COMMENTS, RECOMMENDATIONS, AND SUGGESTIONS:

\_\_\_\_\_  
\_\_\_\_\_  
\_\_\_\_\_  
\_\_\_\_\_  
\_\_\_\_\_  
\_\_\_\_\_


(Please utilize another sheet if necessary)

# June 2019

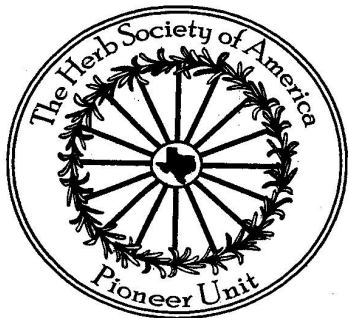


Sun	Mon	Tue	Wed	Thu	Fri	Sat
CG = Culinary Group FH = Festival Hill SG = Sensory						1
2	3	4	5 CG at 11:00 Menke House	6	7	8
9	10 	11	12	13 PU Meeting Annual Meeting	14 EdCon	15 EdCon
16 Fathers' Day	17	18	19	20 FH Work Day 9:00—noon	21	22
23 Newsletter Deadline lrowlett@gmail.com	24	25	26	27	28	29
30						

# July 2019

Sun	Mon	Tue	Wed	Thu	Fri	Sat
	1	2	3 CG at 11:00 Menke House	4 	5	6
7	8	9	10	11 PU Meeting	12	13
14	15	16	17	18 FH Work Day 9:00—noon	19	20
21 Newsletter Deadline lrowlett@gmail.com	22	23	24	25	26	27
28	29	30	31			CG = Culinary Group FH = Festival Hill SG = Sensory Garden





## PIONEER PATHS

Volume 26

Editor: Linda L. Rowlett, Ph.D.

Pioneer Paths is a publication of The Herb Society of America, Pioneer Unit. Nonmember subscriptions are available for \$10.00 per year.

The Mission Statement of The Herb Society of America: "To promote the knowledge, use, and delight of herbs through educational programs, research, and sharing the experience of its members with the community."

---

Chair—Karen Cornwall

Vice Chair Programs—Kathe Forrest  
Secretary—Pat Cox

Vice Chair Membership—Georgia Sowers  
Treasurer—Beverly Elam

Pioneer Unit  
The Herb Society of America  
Post Office Box 23  
Round Top, Texas 78954

